



Putting  
safety first

## MCT Brattberg E-series system

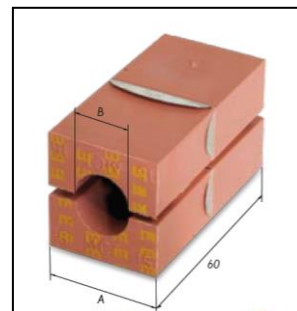
For lightning, EMC, grounding and bonding of communication, instrument, power, braid, or wire armored (AC and TECK 90) cables and copper pipes.



These products comprise of a multi cable and pipe transit system (MCT) series RGS, E-RGS, RGB, E-RGB, RGG, E-RGG, and E-RGP for cables (up to max. 1 AWG G&B) and copper pipes, which ground and bond armored and shielded cables when passing through a single opening in a wall, floor or electrical enclosure.

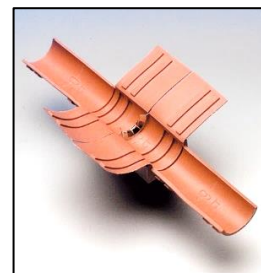
*Putting safety first*

Insert block size	Copper sheet cross section mm <sup>2</sup>	Cable/pipe OD (mm)	Max conductor/braid size (cable/pipe)	
			AWG*	Area mm <sup>2</sup> *
20	4-8	3.5-9.5	11	4
20	6-13	9.5-16.5	9	6
30	13-22	11.5-24.5	6	13
40	21-32	21.5-35.5	4	21
60	42-50	31.5-55.5	1	42
90	50-65	49.5-71.5	1	42
120	75-94	71.5-101.5	1	42



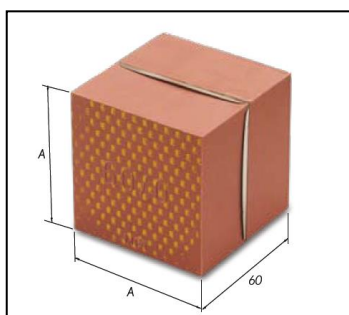
\*Reference: American Wire Gauge (AWG)

Add block size	Copper sheet cross section mm <sup>2</sup>	Cable/pipe OD (mm)	Max conductor/braid size (cable/pipe)	
			AWG*	Area mm <sup>2</sup> *
20	4-8	3.5-8.5	11	4
20	6-12	8.5-13.5	9	6
30	13-21	13.5-23.5	6	13
40	21-31	23.5-33.5	4	21
60	42-45	33.5-49.5	1	42
90	54-64	49.5-69.5	1	42



\*Reference: American Wire Gauge (AWG)

Spare block size
24x5/0
12x10/0
15/0
20/0
30/0
40/0
60/0



<b>Lightning</b>
<b>IEC 62305-1</b>
Lightning protective level
LPL-III

### Standards:

- IEC 62561-1:2017-0312 - Test of lightning current carrying capability
- IEC 62305-1:2010-12 - 3x 100 kA (10/350 μs)
- CSA Std. C22.2 No. 41 - Grounding and Bonding Equipment
- CSA Std. C22.2 No. 18.3 - Conduit, Tubing and Cable Fittings
- CSA Std. C22.2 No. 182.3 - Special use attachment plugs, receptacles and connectors (as a guide)
- UL Std. 467 - Grounding and Bonding Equipment
- UL Std. 514B - Conduit, Tubing and Cable Fittings
- UL Std. 1977 - Component Connectors for use in Data, Signal, Control and Power applications

CSA certificate no. 2638773



*Putting safety first*

**EMC**

The E-series system manufactured by MCT Brattberg has been tested regarding electromagnetic shielding effectiveness in the frequency region of 10 kHz to 2 GHz.

Shielding effectiveness of >100 dB at frequencies below 30 MHz, >60 dB at 30 MHz to 600 MHz and >50 dB at 600 MHz to 2 GHz.

**STANDARD METHODS MET:**

Mil-Std-285 (Military Standard-285)

MIL-STD-461C CE01 CE03 CE07 CS01 CS02 CS06 CS09 CS10 CS11 CS12 CS13 RE01 RE02 RS01 RS02 RS03

MIL-STD-461D CE101 CE102 CE106 CS101 CS114 CS116 RE101 RE102 RS101 RS103

DO-160C/D Sections 15 17 18 19(part of) 20 21 22(part of) 25

EN 55011 Emission for industry and medicine (pre-compliance)

EN 55022 Emission for IT-products (pre-compliance)

EN 61000-4-2 Electrostatic discharge

EN 61000-4-3 Radiated electric field immunity

EN 61000-4-4 Transients/bursts

EN 61000-4-5 Surge

EN 61000-4-6 Conducted rf energy immunity

EN 61000-4-8 Power frequency magnetic field immunity

EN 61000-4-9 Transient magnetic field immunity

EN 61000-4-11 Voltage variations

ISO 11451 Road vehicles - immunity tests for vehicles (part of)

ISO 11452 Road vehicles - immunity tests for components (part of)

- All dimensions are the same for the standard MCT Brattberg components.
- All Insert Blocks are marked with yellow marking (see instructions).

For more complete and detailed information and installation manuals please see MCT Brattberg EMC-catalogue or EMC products at [www.mctbrattberg.com](http://www.mctbrattberg.com)



[www.mctbrattberg.com](http://www.mctbrattberg.com)

MCT Brattberg AB  
SE-371 92 Karlskrona  
Sweden  
Phone: +46-455 37 52 00  
Fax: +46-455 37 52 90  
E-mail: [info@mctbrattberg.se](mailto:info@mctbrattberg.se)  
Website: [www.mctbrattberg.se](http://www.mctbrattberg.se)

MCT Brattberg Ltd  
Commerce Street  
Carrs Industrial Estate Haslingden  
Lancashire BB4 5JT  
England  
Tel: +44 - 170 624 4890  
Fax: +44 - 170 624 4891  
E-mail: [info@mctbrattberg.co.uk](mailto:info@mctbrattberg.co.uk)

MCT BRATTBERG/CMUS  
Houston  
3332 Spring Stuebner Rd.  
Suite G, Spring, TX 77379  
USA  
Phone +1-281 355 8191  
E-mail: [cclarke@brattberginc.com](mailto:cclarke@brattberginc.com)

MCT/CMUS Florida  
Consilium Marine US Inc  
4370 Oakes Road 721  
Fort Lauderdale  
FL 33314  
USA  
Phone +1 954 453 1286  
E-mail: [info@consiliummarineus.com](mailto:info@consiliummarineus.com)

**We have representatives in:**

*Austria - Australia - Bulgaria - Brazil - Canada - China - Croatia - Denmark - Egypt - Finland - France - Germany - Greece - Hong Kong - Hungary - Iceland - India  
Indonesia - Ireland - Israel - Italy - Japan - Korea - Malaysia - Netherlands - New Zealand - Norway - Oman - Philippine Islands - Poland - Portugal - Qatar  
Romania - Russia - Saudi Arabia - Singapore - Spain - South Africa - Switzerland - Taiwan - Turkey - Thailand - UAE - Ukraine - United Kingdom - USA*

Visit our website or contact MCT Brattberg for details of your nearest distributor.

*Putting safety first*

SE-371 92 Karlskrona  
Sweden

Org. No 556027-8102  
VAT No. SE 556027810201

Telephone: Nat. 0455-37 52 00  
Int. +46 455 37 52 00

Telefax: Nat. 0455-37 52 90  
Int. +46 455 37 52 90

E-mail: [info@mctbrattberg.se](mailto:info@mctbrattberg.se)  
[www.mctbrattberg.se](http://www.mctbrattberg.se)